



---

Charles Darwin University

## Territory Population Update New Population Statistics for June 2017

Wilson, Thomas

Published: 14/12/2017

*Document Version*  
Publisher's PDF, also known as Version of record

[Link to publication](#)

*Citation for published version (APA):*  
Wilson, T. (2017). *Territory Population Update: New Population Statistics for June 2017*. Charles Darwin University, The Northern Institute. [http://www.cdu.edu.au/sites/default/files/the-northern-institute/territory\\_population\\_update\\_june\\_qtr\\_2017.pdf](http://www.cdu.edu.au/sites/default/files/the-northern-institute/territory_population_update_june_qtr_2017.pdf)

### General rights

Copyright and moral rights for the publications made accessible in the public portal are retained by the authors and/or other copyright owners and it is a condition of accessing publications that users recognise and abide by the legal requirements associated with these rights.

- Users may download and print one copy of any publication from the public portal for the purpose of private study or research.
- You may not further distribute the material or use it for any profit-making activity or commercial gain
- You may freely distribute the URL identifying the publication in the public portal

### Take down policy

If you believe that this document breaches copyright please contact us providing details, and we will remove access to the work immediately and investigate your claim.



After Marina Sinocchi



NORTHERN INSTITUTE  
People. Policy. Place.

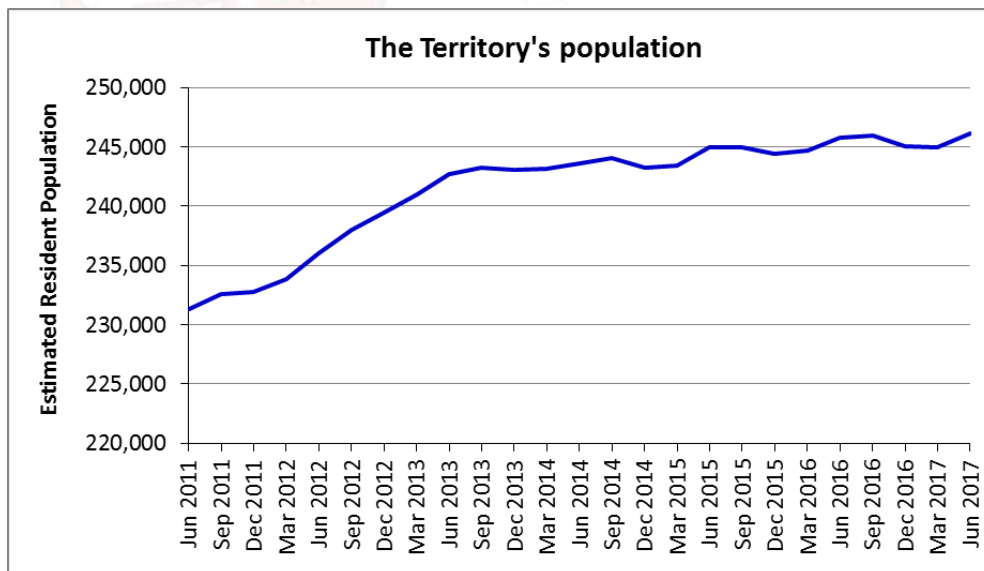
# Territory Population Update

## New Population Statistics for June 2017

### Summary

Population figures just published by the Australian Bureau of Statistics show that the total Estimated Resident Population of the Northern Territory stood at **246,105** at the end of June 2017, an increase of 365 over one year earlier. This represents a growth rate over the year of 0.15%. The population of 246,105 gives the Territory a 1.0% share of the national population of 24,598,933.

The graph below illustrates how the Territory's population has changed over recent years. Following strong increases in 2012 and early 2013, population growth has been modest since then, fluctuating between growth and decline. In the most recent quarter population growth has resumed, increasing by 1,115 over the 3 months to June 2017. It follows population decline in late 2016 and early 2017.



Note: Population statistics are for the end of each month shown

Source: ABS



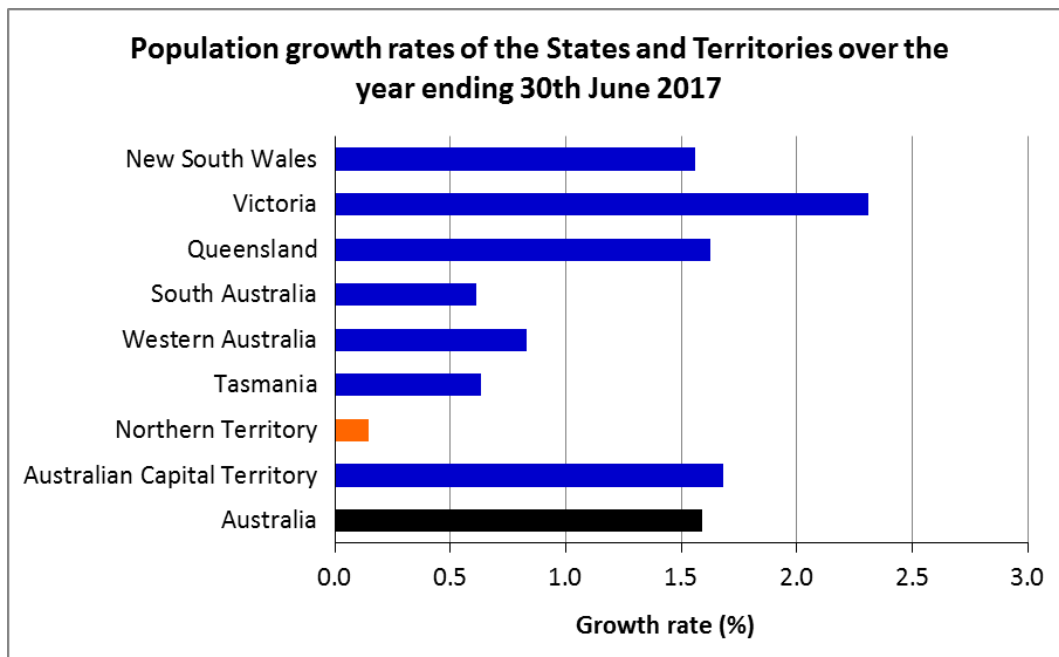
NorthernInstitute



@cdu\_ni



The bar chart below shows how the Territory's population growth rate during the 12 months to 30th June 2017 compares with that of the other States and Territories and Australia as a whole. The Territory's population growth rate of 0.15% is the lowest of all jurisdictions.



Source: ABS

### What factors are driving population change in the Territory?

Population change in the Territory is the result of several demographic processes. These are:

- births
- deaths
- in-migration from interstate
- out-migration to interstate
- immigration from overseas
- emigration to overseas.

These six factors are often summarised as:

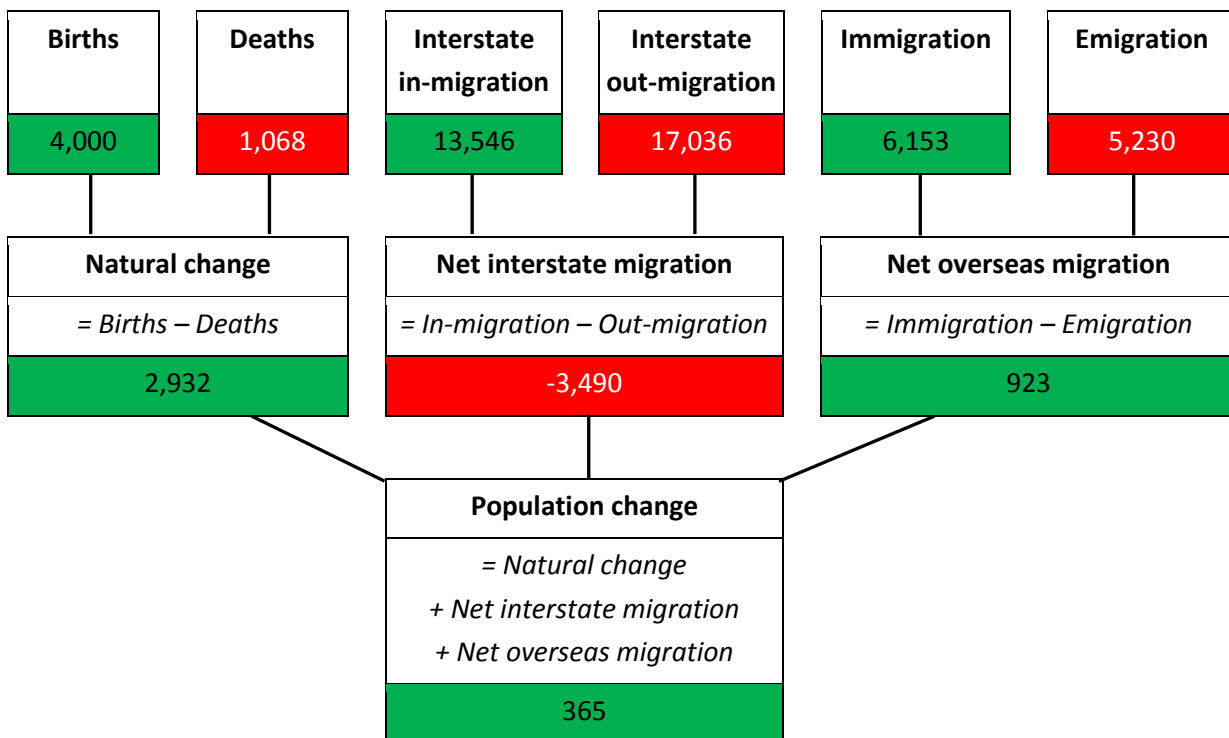
- natural change (births minus deaths)
- net interstate migration (in-migration minus out-migration)
- net overseas migration (immigration minus emigration).



The diagram below shows how these factors of population change affected population growth during the 12 months to 30th June 2017. Processes which remove people from the Territory are shown in red; those which add people to the population are shown in green.

- During the year there were 4,000 births and 1,068 deaths to Territory residents, giving natural change of 2,932.
- There were an estimated 13,546 in-migration moves to the Territory from interstate, while there were 17,036 out-migrations to other parts of Australia. Net interstate migration was therefore -3,490.
- The Territory’s population experienced immigration of 6,153 from overseas, while emigration to other countries was 5,230. Net overseas migration was therefore 923.
- Total population change over the year was estimated to be 365.
- Although overall population change was modest, the churn of population (numbers of people being added and removed from the population) was substantial. This is a long-established characteristic of the Territory’s demography.

**Factors affecting population change in the Territory during the year ending 30th June 2017**



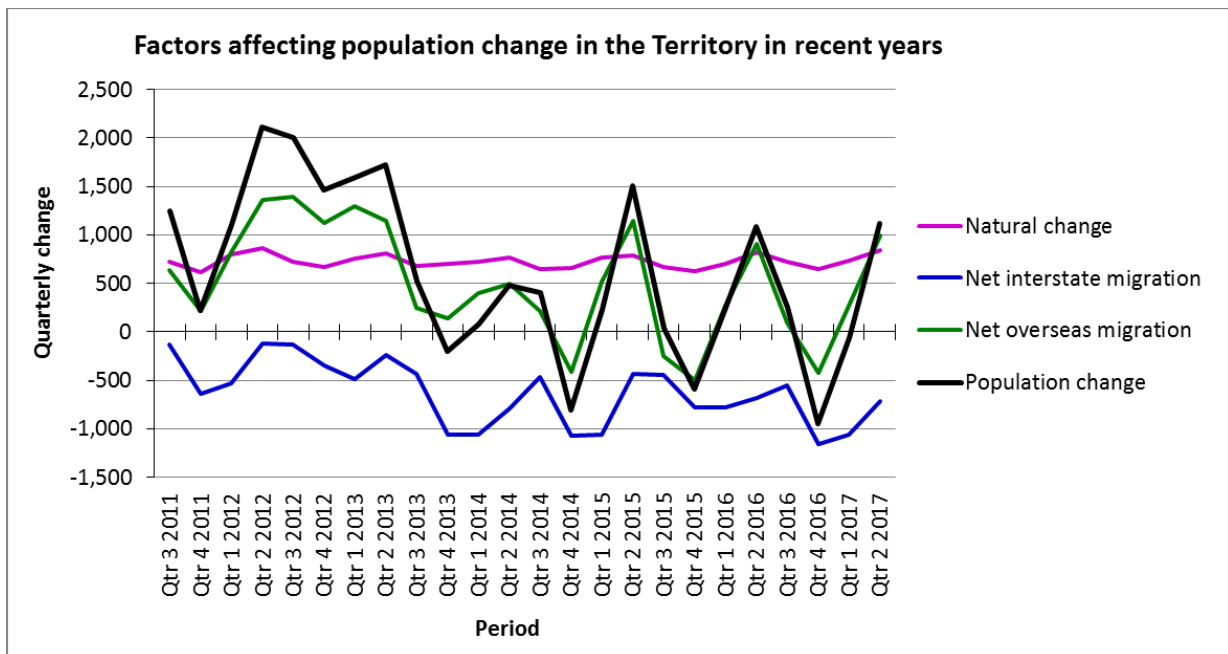
Source: calculated from ABS data

Note: Components of population change may not sum to total population change due to measurement errors



**Factors affecting population change in recent years**

Much of the volatility in the Territory’s population growth over the years is due to fluctuations in migration, which in part reflects fluctuations in the Territory’s economy. The graph below shows how natural change, net interstate migration, and net overseas migration have varied on a quarterly basis in recent years. The slow growth of the Territory’s population over the last few years is due to net interstate migration losses and lower levels of net overseas migration. Higher population growth in the most recent quarter is due to smaller net interstate migration losses and larger net overseas migration gains.



Note: Periods are quarters of the year; e.g. “Qtr 1 2016” refers to the first quarter of 2016

Source: ABS

Note: Components of population change may not sum to total population change due to measurement errors

**Author**

Dr Tom Wilson, Northern Institute, Charles Darwin University.

**Data sources**

All data are derived from the Australian Bureau of Statistics bulletin [Australian Demographic Statistics](#) (released quarterly and containing data up to a date six months prior to publication) and the online data service [ABS.Stat](#). Be aware that these statistics are *estimates*, not precise values.

**Interested in finding out more about the Territory’s population?**

See the webpage of the [Demography & Growth Planning](#) team at the Northern Institute, and our blog, [demographyNorth](#).