

IMPACT PATHWAY PLAN (IPP)

This brief questionnaire (6 questions) guides you through a series of prompts about the real-world impact of your research project. If you review the information provided here carefully, it should take approximately 10 minutes to complete. Completing the questionnaire, submitting it and attaching a copy to your Award Record is required to receive a cost code and your first grant payment. The information collected is important so:

- CDU -- for the first time -- can identify potential high impact research projects, recognise you for the work you do, and potentially promote your work through the media and to the broader public.
- You can plan for the real-world impact you want to create from the start of your project, maximise potential benefits of the research, attract additional funding, gain recognition, build robust networks and enjoy a successful research career.

There is a *Save and Complete Later* option at the bottom of each page of the questionnaire so you can save your work as you go.

INSTRUCTIONS

- **Prepare** - Review the **USEFUL INFORMATION & DEFINITIONS** section below and the completed IPP example to use as a guide as you are completing the IPP. For many, this may be enough information to complete it with ease.
- **Additional useful information** - Watch the **Research Impact Planning Canvas video** (9 minutes) and review the **Canvas example 1: A new, healthy, tasty snack**. The questions from the Canvas are similar to those in the IPP questionnaire. You can also complete your own canvas by going to **Impact resources, tips, tools, videos and useful info** on the Research@CDU sharepoint page.
- **Be concise** - Write short, simple, concise answers, in plain English, avoiding technical jargon. Write in a way that is accessible to a general audience. The information may be used for future purposes such as a case study
- **Attach a copy of the completed IPP to your Award Record and save a copy for yourself** - When you have completed and submitted the questionnaire a copy will be emailed to you to do so.
- **An Impact Officer may be in contact** - to follow up and find out more about your project once submitted.

USEFUL INFORMATION & DEFINITIONS

Real-world impact is the contribution that research makes to the economy, society, environment or culture, *beyond the contribution to academic research*. It is the *measurable benefits and change that results due to the sustained use, application and/or influence of research*. In other words, it is real change in the real world and may include:

- **Cultural:** benefiting ideas, reality, values, beliefs and improved understanding
- **Economic:** improving revenue, economic returns, productivity, growth
- **Educational:** progressing training, capacity building, learning outcomes, skills
- **Environmental:** protecting biodiversity, natural resources, tackling climate change
- **Health:** improving life expectancy, quality of life, prevention of illness
- **Political:** enriching policy making, political stability, equality
- **Social:** enhancing wellbeing, quality of life, community welfare
- **Technological:** new advances, products, improvements

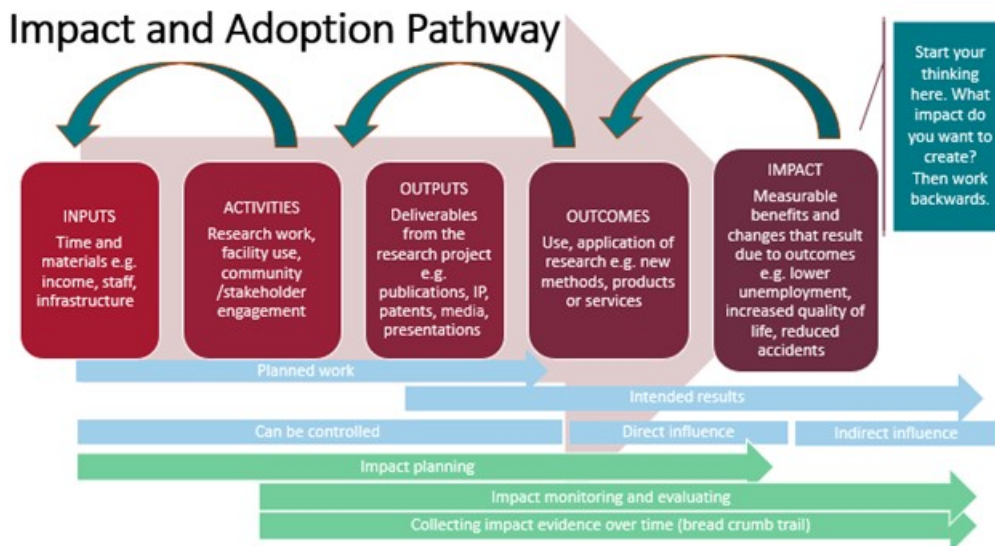
Impact evidence tends to be looser than research evidence and usually includes a mix of quantitative and qualitative **indicators** and information like testimonials, survey results, interviews, data analysis etc.

Real-world impact is what this questionnaire focuses on and differs to academic impact.

Academic impact is the demonstrable contribution that research makes to *academic advances like understanding, methods, theory or application* and may include Q1 and peer review publications, reports, outputs, citations, conference presentations and so on.

An **Impact and Adoption Pathway** is important for setting up the conditions for creating real-world impact. It is a simplified chain of events - or 'productive interactions' - that connects research to potential benefits or change to society. It includes subtle but important differences between outputs, outcomes and impacts:

- Outputs are research products.
- Outcomes are the short-term results that happen due to outputs.
- Impacts are the measurable benefits and change that happen due to the use or application of outputs and outcomes.



The Impact and Adoption Pathway requires starting with the end in mind; in other words, in addition to asking ‘what research question needs answering?’ also ask ‘what would be the best possible impact from the research program?’ and then work back from there. This approach provides a fresh way of looking at a research program and creates opportunities for recognising, tracking and collecting potential impacts during and after the research program. It also maximises the chances of asking the right questions, engaging the right beneficiaries and end users, and gathering evidence along the way, rather than waiting after the research program is complete. Then you will have the information you need to create an impact narrative, or case study, about your research program.

Impact Adoption is part of your planning process. It includes *thinking about who you will engage with, why and how to maximise the potential use and benefits from your research and minimise barriers*. This includes thinking about people or organisations who have an interest in your research project, or can affect or are affected by its outcomes, beneficiaries and end users. It also includes thinking about those who could be blockers and how to engage them to turn them into supporters. Finally, it requires thinking about how you are going to communicate and promote your research to each stakeholder, beneficiary and end-user to increase the uptake, use and benefits of your research.

Measuring real-world impact is more about collecting impact evidence over time that *demonstrates* a sustained use or application of research, particularly benefits. There is no one preferred method for demonstrating or measuring real-world impact and the evidence collected is much looser than research evidence. It just needs to be:

- Factual and hold up under scrutiny
- Be an indicator of change
- Happen over time (bread crumb trail)
- Include a mix of indicators to create a credible and convincing narrative account

Impact evidence usually includes a mix of quantitative and qualitative **indicators** and information like testimonials, survey results, interviews, data analysis etc to help develop a clear, concise, plausible **impact narrative**, or case study that ‘connects the dots’ of the bread crumb trail, evidence and indicators you have collected. The **case study** is considered the preferred way of demonstrating research impact. A case study is a short, accessible, jargon free synopsis that answers three questions: What the societal challenge is, how the research met the challenge, and how the research benefits different types of stakeholders. The benefits or change the research creates be small, or large, wide ranging or to a smaller audience. In some cases it can even be ‘hoped for change’ that informs the next steps of your research program.

1. PROJECT INFORMATION

1a. RIS Application ID *

99066324

2a. Research Project Title: *

Rio Tinto Gove pond closure - Projection Augmented Physical Landscape modelling for mine closure consultations.

2. CHALLENGE

2a. What challenge in society does your research address? In other words, what's at stake? *

Obtaining Free, Prior and Informed Consent (FPIC) during mine development and closure process with indigenous (and other) stakeholders

2b. How does your research address the challenge? *

In this context, projection-augmented reality models providing a new way to visualize current and post-mine landscapes. The technique is being

3. IMPACT PATHWAY AND ADOPTION

3a. Based on your Impact Pathway (inputs, activities, outputs, outcomes) what impacts are you planning the research will contribute to? Choose 1-3 of the most likely and describe how. *

- Cultural: contributes to ideas, reality, values, beliefs
- Economic: contributes to revenue, economic returns, productivity, growth
- Educational: contributes to training, capacity building, learning outcomes, skills
- Environmental: contributes to biodiversity, natural resources, tackling climate change
- Health: contributes to life expectancy, quality of life, prevention of illness
- Political: contributes to policy making, political stability, inequality
- Social: contributes to wellbeing, quality of life, community welfare
- Technological: contributes to new products, technological advances or improvements

Economic Impact *

From a social sustainability vantage point, even assuming the geological availability of mineral resources, the license to operate poses a significant threat as a leading risk to the survival of the mining industry and a top risk for the mining sector heading into the future.

Environmental Impact:

PALM tech is being used to support the communication of a complex array of mine site data, including cultural heritage and modelled biophysical processes to assure clear communication within closure teams to assist in producing the best rehabilitation outcomes.

Social Impact: *

The importance of Indigenous cultural heritage within broader environmental, social and governance (ESG) considerations will be highlighted by allowing the clear communication from Traditional Owners of their perspectives with regard to the pond closure operations.

3b. Who will benefit or use the research? *

The traditional owners of the lands undergoing rehabilitation, closure. The broader Gove community, Rio Tinto.

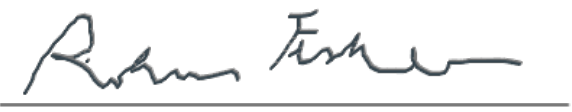
3c. How will you reach and engage beneficiaries and users, based on what you know about them? *

I am working directly with the Gove Ponds closure team. They will be the main facilitators of community engagement.

3d. What evidence will you collect to measure the impact? *

Post project communication with key people on the Gove Ponds closure team will be maintained. Descriptions of model use and impact will

Signed: *



A handwritten signature in black ink that reads "Rohan Fisher". The signature is written in a cursive style and is positioned above a solid horizontal line.

Dated *

01/05/2024

Name: *

Rohan Fisher

Contact email: *

rohan.fisher@cdu.edu.au

Faculty/Institute/Centre: *

FAS: Faculty of Arts and Society

Thank you for completing the questionnaire. Once you hit 'submit' you will receive a copy of your answers. Attach one to your award record. Keep one for your records. **Please ensure to check you junk/spam folder** if not received within 10 minutes.